

- Transfer data and results between Socrates and any Windows program
- Export data directly to MS Excel at the click of a button
- Convert between SI and English Units
- Cost Analysis Module provides the ability to perform Present Worth and Annualized Cost Calculations
- Database management to add new or edit current CRAs

Analyze three types of non productive environments:

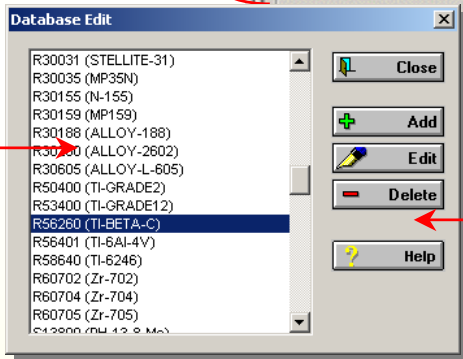
- Completion Fluids
- Acidizing Wells
- Water Injection

Incorporates a number of critical design parameters for material selection and corrosion evaluation

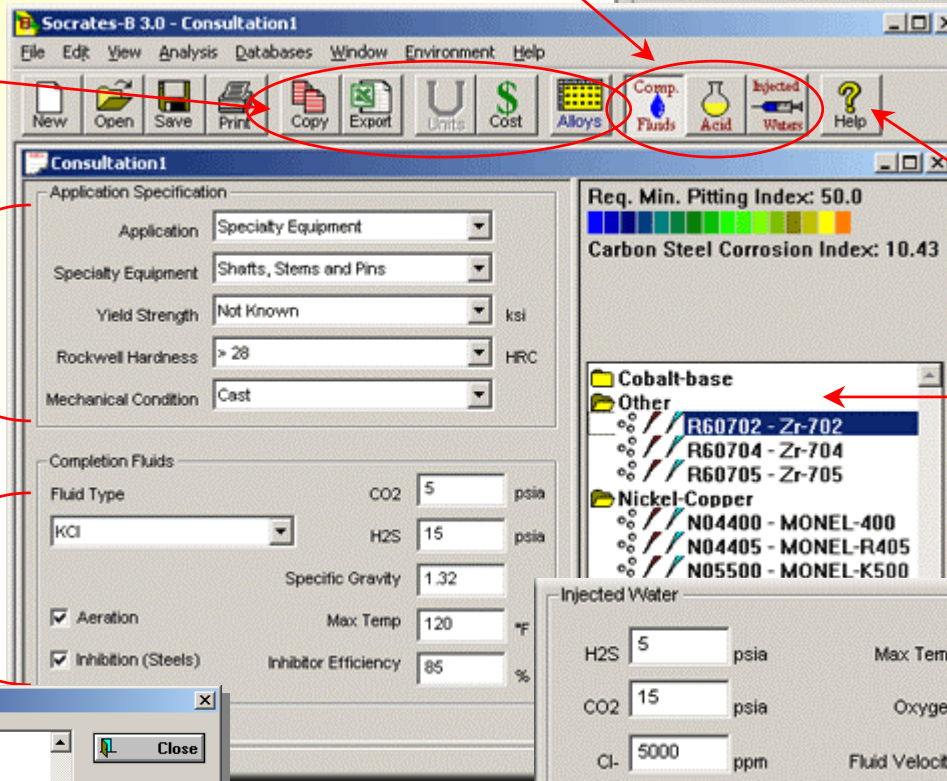
Analyzes environmental and compositional effects for corrosion/cracking analyses

Updated rules and data on over 120 CRAs and the ability to add or modify the CRA Database

Ability to Save and Print Consultation Reports and incorporate user comments.

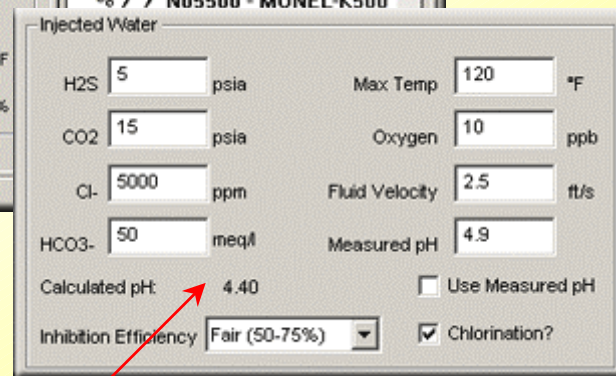
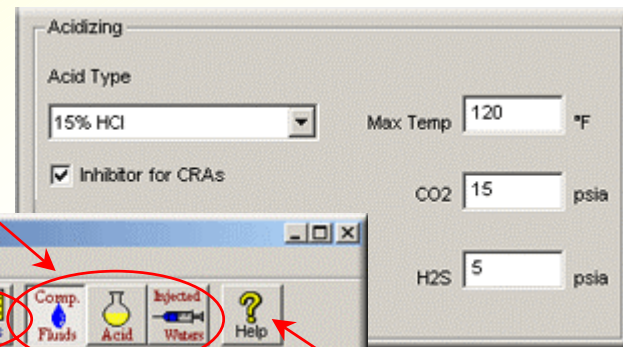


Online Database Access using ODBC



In-depth, on line Help system

Visual representation of selected CRAs



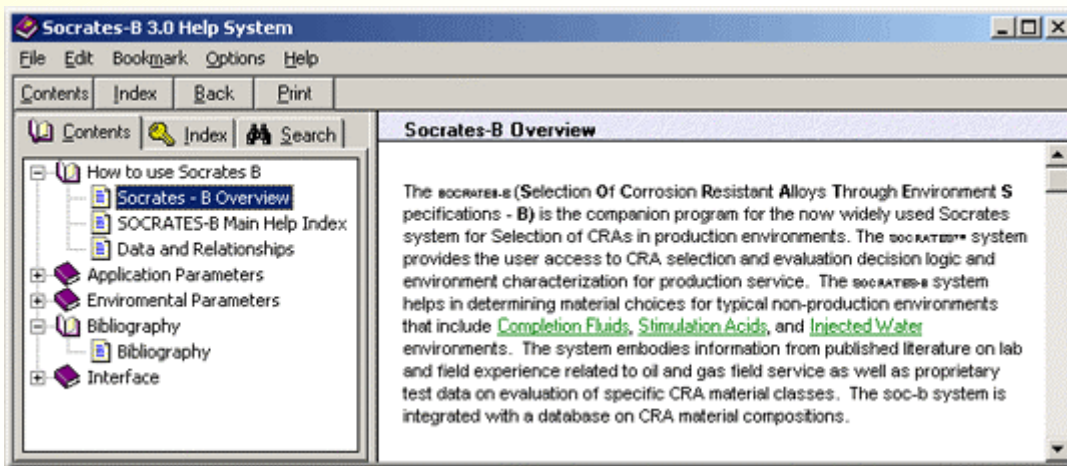
Instantaneous Bulk pH calculation for Injected Waters

New Features & Benefits

- Updated rules and data on over 120 corrosion resistant materials, gleaned from latest corrosion literature, extensive lab tests and real field experience
- Perform Material Selection analysis for various non productive environments like Water Injection, Stimulation Acids and Completion Fluids.
- Instantaneous Bulk pH calculation for completion fluids environment.
- Expanded, context sensitive help facility providing instantaneous guidance on both system utilization and technical questions
- Enhanced cost analysis module which provides end users the ability to store cost data for materials and compare cost for different materials
- System Compatibility with all commonly used PCs using MS Windows 95/98/2000/XP or NT

Highlights

- Access to accurate, comprehensive, current material selection data on the whole gamut of corrosion resistant materials currently used in the industry
- Automation of complex material selection / corrosion evaluation tasks including evaluation for general corrosion, localized corrosion (pitting / crevice), stress corrosion cracking and sulfide stress cracking
- New tools that provide broad functionality and enhanced productivity
- Access to Technical Support and extensive program documentation and literature.



User Interface

- A re-designed report generation module with facility for including user comments for consultations
- Module to export Socrates B 3.0 consultation data to Microsoft® Excel
- Ability to share Socrates data electronically with other programs through copy and paste functions
- A completely re-designed hyper text help system with access to online data and rules